

Agroforestry Workshop

Pilot Silvopasture Establishment with Multi-Species Grazing

March 19, 2018
Jacob James Marty



GREEN FIRE FARM
A SIXTH **re**GENERATION

Monticello, WI
www.greenfirefarmllc.com







What I'm Doing

- ▶ Mimicking natural communities
 - ▶ Grasslands
 - ▶ Savannas
- ▶ Results
 - ▶ Healthy Soil
 - ▶ Nutrient and Energy Cycling
 - ▶ Water cycle and utilization
 - ▶ Habitat
 - ▶ Diversity
 - ▶ Communities
 - ▶ Vibrant and Beautiful
 - ▶ Resilient and Robust
 - ▶ Happy and Fulfilling



Google





















NRCS Cost-Share

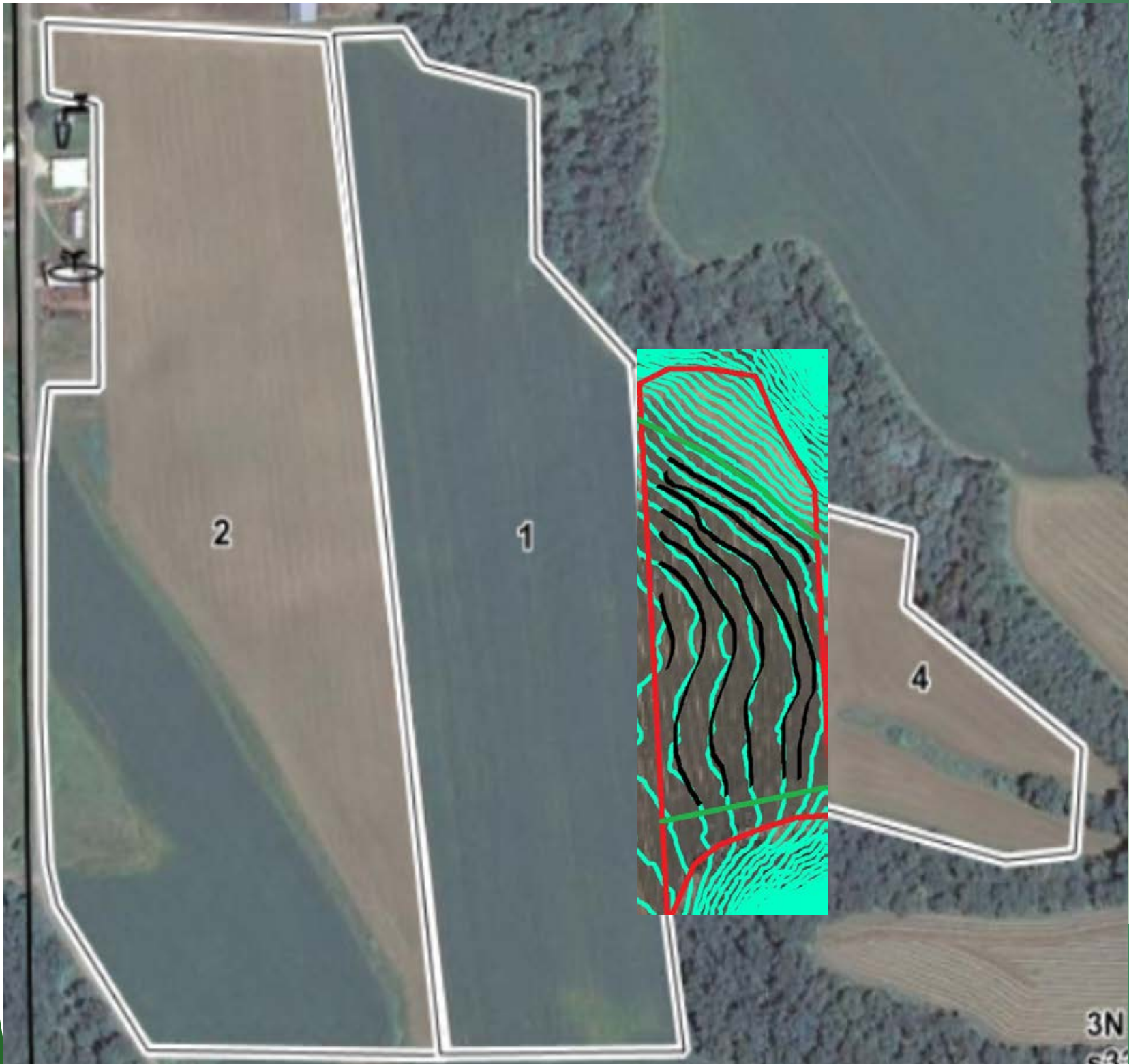
- Environmental Quality Incentives Program (EQIP)
 - Honey Bee and Pollinator Initiative
 - Fences
 - Seeding
 - Water Line
 - Water Tanks
 - 3 Years Prescribed Grazing
 - Erosion concerns



NRCS Cost-Share

- Conservation Stewardship Program (CSP)
 - 2 Contracts
 - Host a Field Day
 - Calving Season
 - N-fixing cover
 - Water tank ramps
 - Pollinator Planting



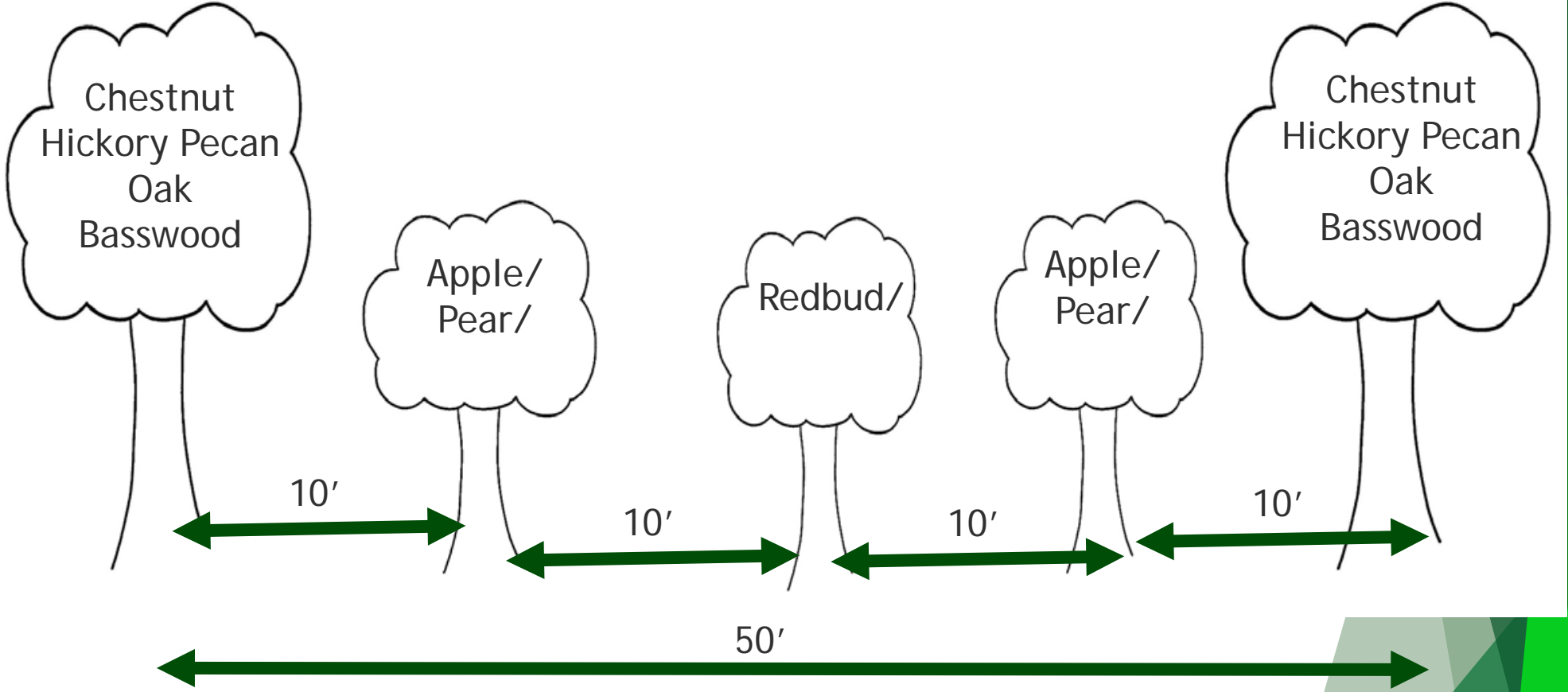


Silvopasture Lessons



Establishment

- 8 acres, 1000 trees in April
 - Pasture seeded and grazed 3x previous year
- Pseudo Keyline
- 45' row spacing
 - Furrow (tree planter) > shovel and hand plant
- 10' tree spacing within row
- Modified NAP Pattern
 - Permaculture Orchard DVD
 - Nitrogen-rich Tree > Apple > Pear
 - Savanna Modified
 - Chestnut/Pecan/Oak/Basswood (Canopy)> Apple/Pear > Redbud > Apple/Pear > Canopy Tree
- Tree Tubes
 - Miracle Pro, Blue-X, Arborshield
- Root Dip
 - Arbuscular Mycorrhizae (Endo) *better than ectomycorrhizae











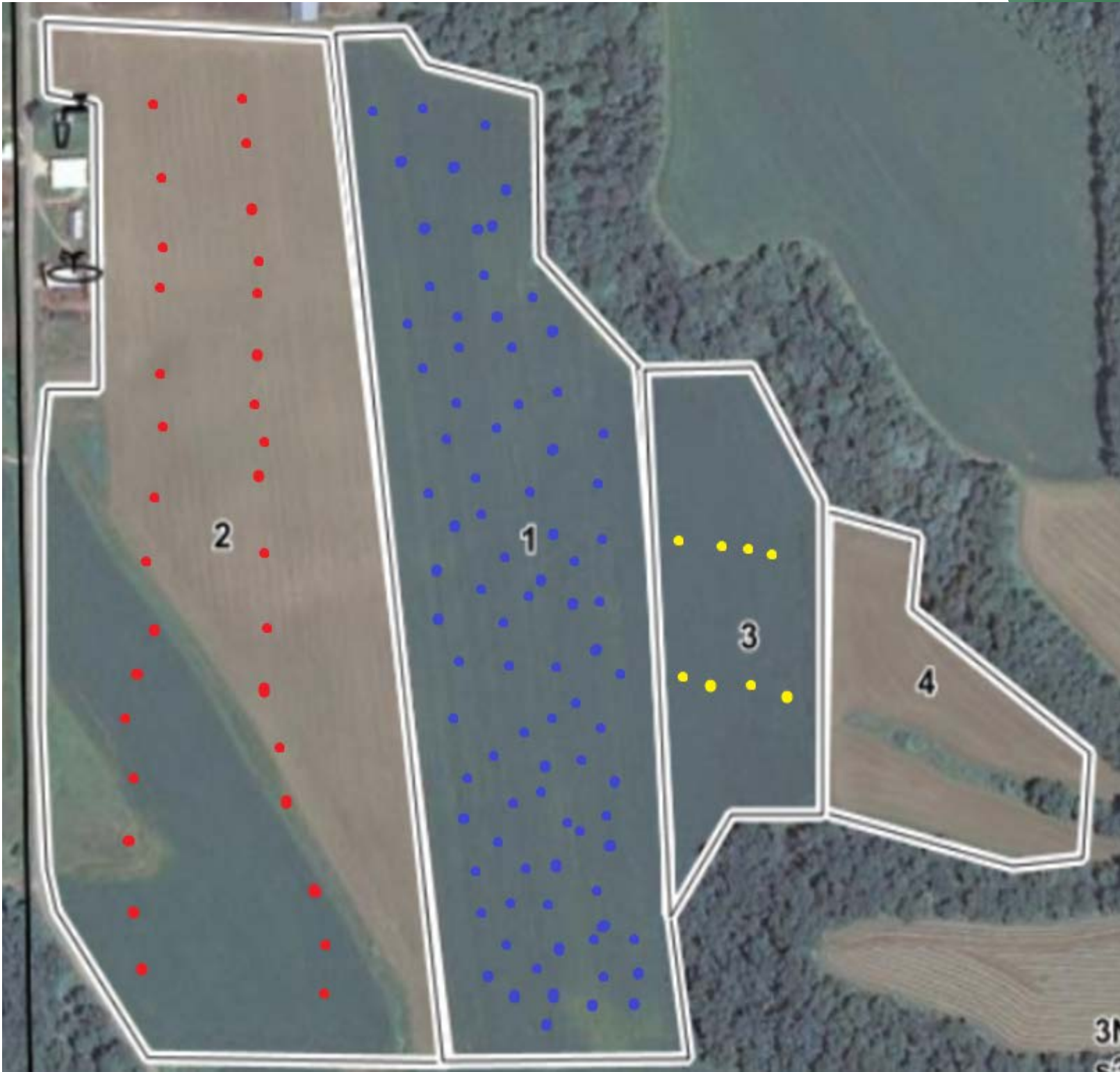
Tree Upkeep

- No Irrigation
- No Regular Mowing or Weed Management
 - Long forage matured and created a mat eventually
 - Got away with it
 - Mow fencelines for electric netting
- Low Labor Availability
- Constant Standing Up
- Fill in Pig Wallows
- Seed Mudded Areas

Lessons Learned

- Wider Alleys
 - 45' -> 60' (20% less trees) up to 200'
 - Depends on livestock and group size
 - Cattle (5 ac/day)
 - Pigs and shee (1 acre/wk)
 - Mowing area
- Linear or curved?
 - Shelters
 - Layers
- Sporadic Plantings?
 - With Arborshield
 - Mandatory for Cattle/Pigs
- Tree Tubes
- Stakes/Post





Blue-X products . order . contact

Tree Shelters

Home
Why Blue-Light?
Products
Grapevine Shelters
Tree Shelters
Direct Seed Shelters
Prices
Order
Blue-X® Dealers
Acorn Collection
Photos
Installation
Customer Comments

For accelerated growth and advanced seedling survival, reduced costs for commercial growers, reforestation projects, and large scale planting projects large tree shelters are the best choice.



- Grow Tubes - Tree Tubes - Seedling Tubes - Tree Stakes
- PRODUCTS
- MIRACLE TUBE
- TREE PRO
- TREE STAKES
- VINE PRO
- BARK PRO
- ROOT DIP
- FERTILIZER
- WEED PRO WEED MATS
- SOIL DECOMPACTION
- INSTALLATION GUIDE
- FREE SHIPPING ISN'T FREE

MIRACLE TUBE TREE SHELTERS

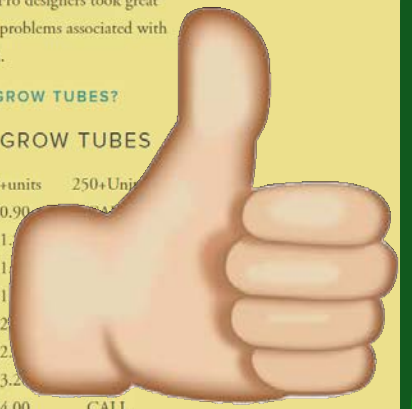


Miracle Tube tree tubes were introduced in 1999 to compete with the tube-type tree shelter. However, Tree Pro designers took great pains to make sure the problems associated with tree tubes were avoided.

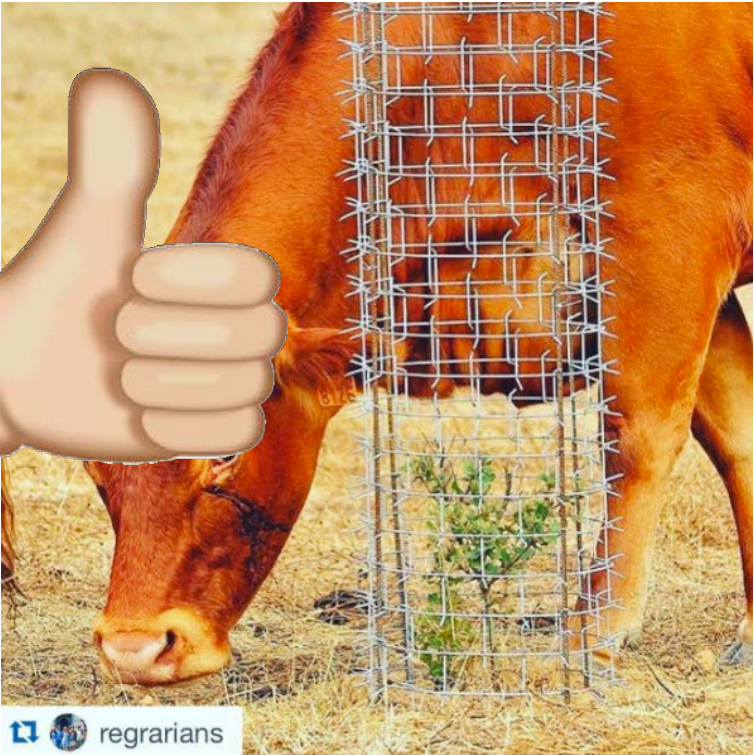
WHAT ARE TREE GROW TUBES?

PRICING FOR GROW TUBES

Size	1+Units	50+units	250+Units
12"	\$1.20	\$0.90	\$0.70
18"	\$1.60	\$1.10	\$0.80
24"	\$1.99	\$1.30	\$0.90
30"	\$2.74	\$1.80	\$1.20
36"	\$2.99	\$2.00	\$1.30
48"	\$3.90	\$2.50	\$1.60
60"	\$4.60	\$3.20	\$1.90
72"	\$5.50	\$4.00	CALL



	Miracle Pro	Blue-X	Arborshield
Costs	\$3-4	\$4	\$0-5
Sturdy?	Mostly	No	Yes!
Install Time	Quick!	Slow	Very slow
Reusable?	Maybe?	No	Yes!
Concerns		Flimsy, Rough top	Injury to livestock



regrarians

Search

Home / Fiberglass / Fiberglass Posts

- Products**
- ⊕ Clearance
 - ⊕ Connectors
 - ⊕ Electric Fence Chargers
 - ⊕ Electric Net Fencing
 - ⊕ Electric Supplies
 - ⊕ Fiberglass
 - ⊕ Gates
 - ⊕ Hardware
 - ⊕ Horse Fence
 - ⊕ Instructional Material
 - ⊕ Insulators
 - ⊕ Livestock Panels
 - ⊕ Plastic Net Fencing
 - ⊕ Post Drivers
 - ⊕ Posts
 - ⊕ Rotational Grazing Supplies
 - ⊕ Solar Panels
 - ⊕ Specialty Applications
 - ⊕ Tools
 - ⊕ Watering Systems
 - ⊕ Wire

FiberRod 2/3" -SunGuard - 6'



Sunguard Fiberglass Posts have a protective coating to prevent yellowing and splintering. They are lightweight yet durable and flex upon impact. Eliminate replacing damaged insulators and tracking down shorts at the fence post.

- Self-insulating
- Flexes upon impact
- Will not rot or rust
- Ideal for rotational grazing

Item # F23-6SG

Weight 1.76 lbs

Catalog page: 52

\$5.28 EACH

QTY

	Wood	Fiber Glass	Rebar
Costs	\$1.25-\$2	\$5	\$0-5
Sturdy?	No	Yes	Yes
Reusable?	Probably No	Yes	Yes
Concerns		Landfill	Heavy

Jacob James Marty

608-558-5493

Jacob.j.marty@gmail.com

www.greenfirefarmllc.com



GREEN FIRE FARM
A SIXTH **re**GENERATION

Monticello, WI
www.greenfirefarmllc.com